

Shiraz V6 Getting Started

Introduction

Shiraz V6 is available for Mac OSX, Windows 2000/XP/2003 and major Linux distributions. If you are using any other operating system, please upgrade to one of the supported types.

From this document you will learn how to install Shiraz and to set up queues in the Server and finally do your first print from the Shiraz RIP.

You will also be shown on how to install from the list of available profiles on the DVD or download from the AIT International FTP site. We will also cover setting up port monitors and virtual Postscript printer drivers for the Shiraz RIP so that you can output files to the RIP from any design application.

Below is a minimum and recommended specification for Mac and PC. This is a guide and is based on printing using only one queue at a time. For more simultaneous printer queues we would recommend multiple processors and extra memory.

PC & Linux

Intel Pentium 4 @ 2Ghz

512Mb RAM

10Gb Free Hard Disk Space

Windows 2000/XP Pro/2003 Server

Red Hat, SUSE

Mac

PowerMac G4 @ 733Mhz

512Mb RAM

10Gb Free Hard Disk Space

Mac OSX 10.2.8+

The Shiraz RIP is supplied on separate DVD-ROMs for Windows and Mac OSX. These DVDs also contain a big library of profiles for various printers supported. The supplied USB dongle (security key) is fully cross platform and can be used on all the operating systems supported. In the absence of a dongle the RIP will operate in demo mode with limited functionality. All prints are marked with the Shiraz logo in the demo mode.

Start

Insert your Shiraz DVD-ROM into the appropriate drive on your computer. On the Windows platform the DVD automatically boots up to present the main Shiraz installer menu as shown below.



On the Mac OSX please browse the DVD drive and locate the 'Start' application. Now double click on it to launch the main installer.



Please note that to install the Shiraz RIP on your computer you must log-in as a user with Administrator rights.

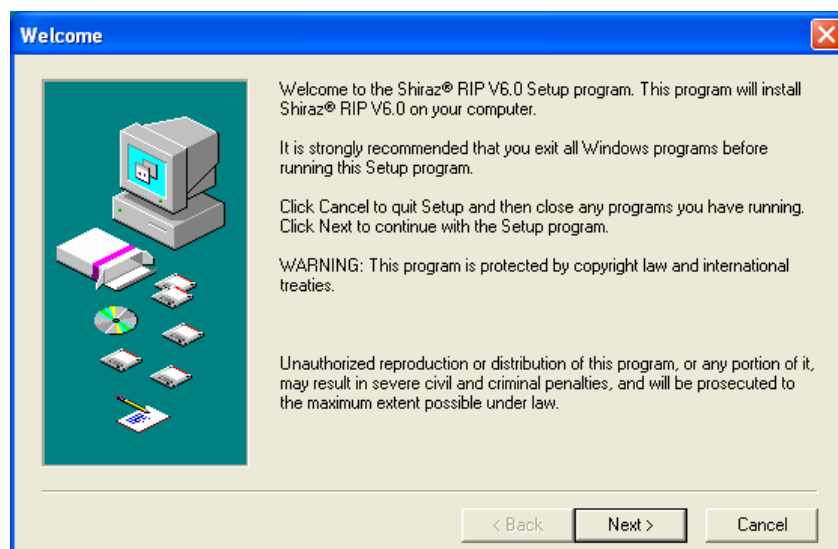
The menu offers five options. Click on the one required to launch it.

Installing

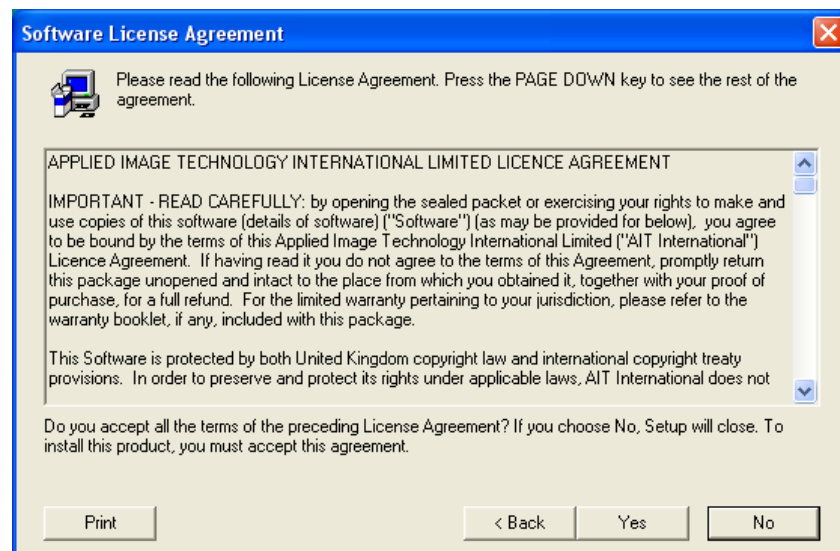
Double click on the first option 'Install Shiraz' to start installing the RIP on your computer.

Windows

On the Windows operating system you will see the following opening window. Click 'Next' to continue.

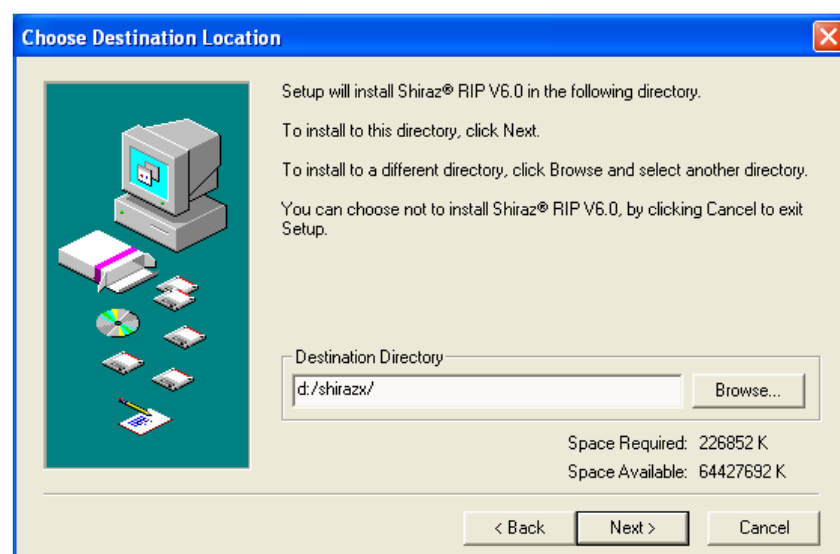


Next you will be presented with the licence agreement. Please study it and if happy click 'Next' to go to the next stage.



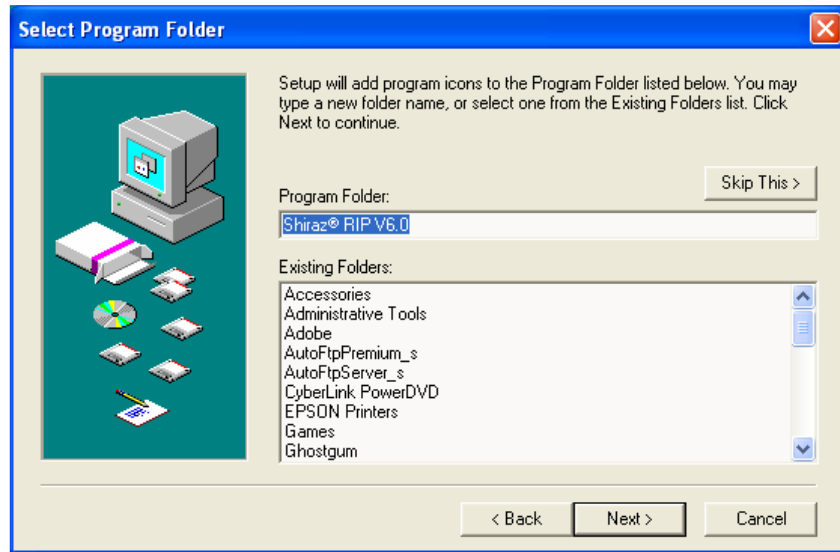
If there are any release notes then you will be shown this next. Please read this and if happy to continue click 'Next'.

Now you will need to choose the path where you would like the Shiraz RIP to be installed. It is recommended that you install Shiraz to a large, separate partition of at least 10 GB free capacity. Once you have decided type the path into the installer page (or use the browse button to select), and click next.

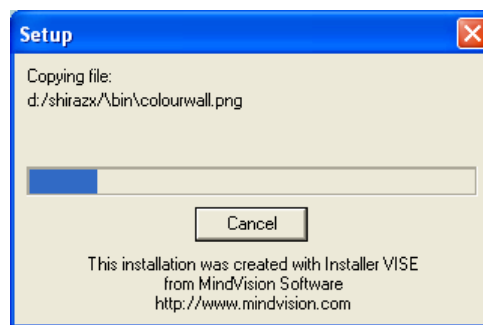


If the disk space required for the installation is not available on the selected disk drive then the installation program will be terminated. You will then need to choose another drive or free some space on the previous one before continuing.

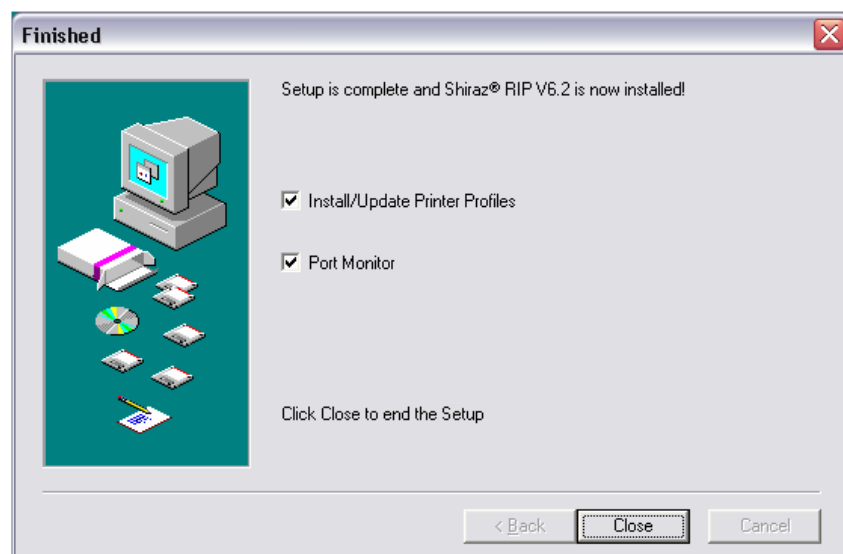
You are now asked where you would like the program groups to be placed in your start menu. Click next to continue.



Setup now has enough information to continue and will install on clicking next again.

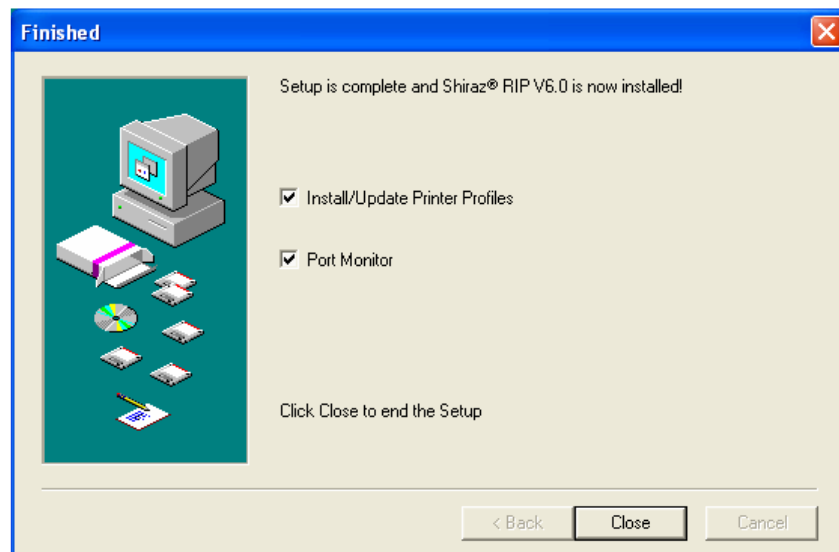


The installer will now show the name of the files being installed. The installation should not take more than a few minutes depending on your hardware to finish.



Once Shiraz Setup has finished installing all the necessary files, it will ask you if you want to 'Install/Update Printer Profiles' and to install the 'Port Monitor'. The port monitor will install on

your PC the necessary software required in order to setup the Shiraz virtual Postscript printers. These printers are then used like the standard Windows drivers to output Postscript files automatically from any applications for use with the Shiraz RIP. The actual setting up of the virtual printers is covered in the Tools manual and online help.



We will look at the 'Install/Update Printer Profiles' option further down in this manual.

Reboot your computer and Shiraz is now fully installed on your Windows PC and is ready to be configured and use. There should be a shortcut on your desktop called 'Shiraz® RIP V6.2'. Double click on this shortcut to load the Shiraz V6.2 Launcher.

Later in this manual we will setup and print our first job using the Shiraz RIP.

Mac OSX

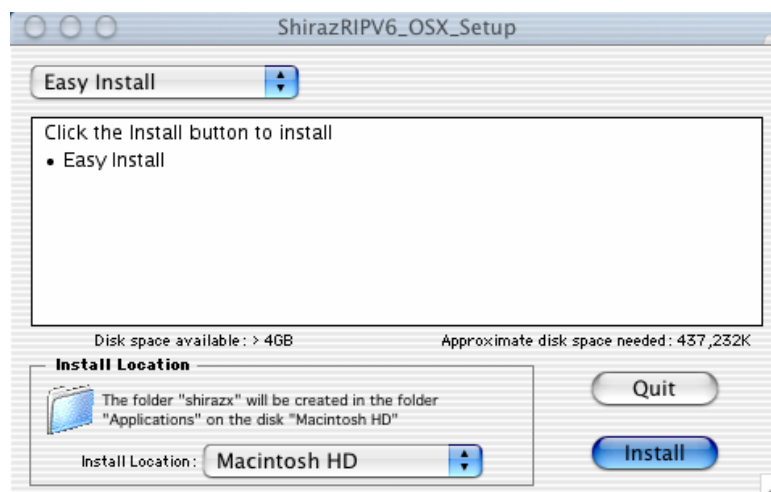
The installation program requires you to have Administration rights in order to install all the required components. The first screen will ask for Authentication of an Administrator user. Type in the Administrator's username and password to continue.



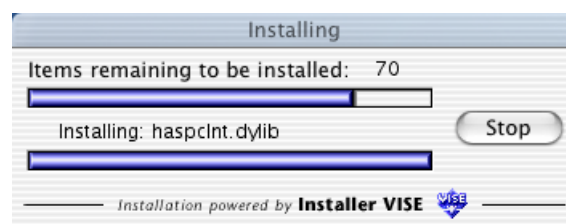
Once the details are authenticated you will be presented with the AIT International licence agreement. Please study it and If you agree, click 'Accept' to continue.



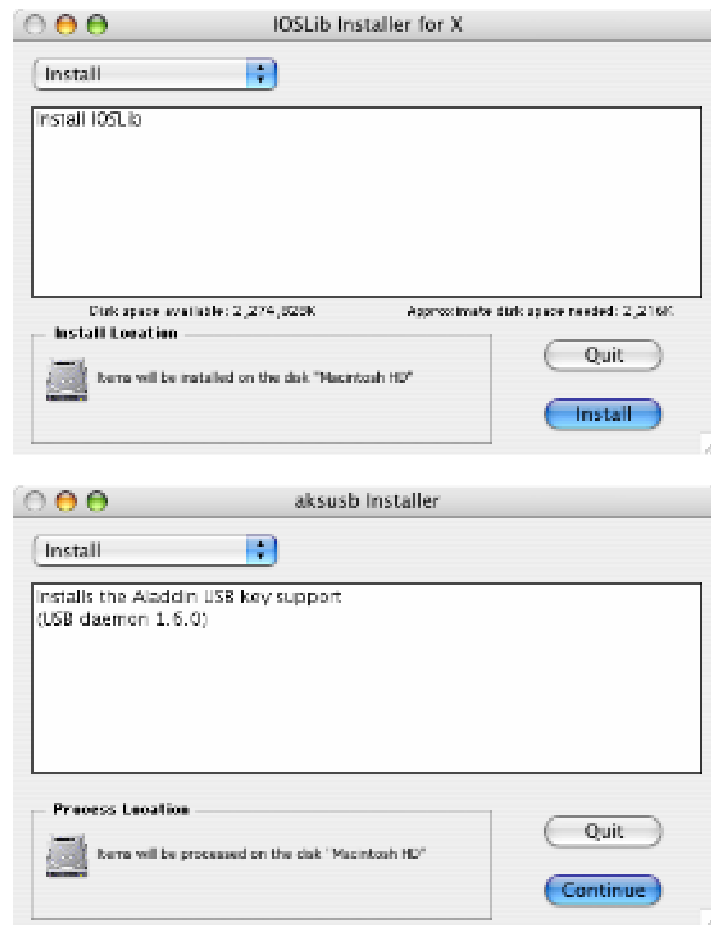
Next, make sure the installer is set to 'Easy Install' in the top left hand corner and click 'Install'. The default install location for Shiraz on Macintosh is the Applications folder on the main disk. You can change the location of installation here if you wish.



The installer will automatically close down all other applications before continuing. While the installer is copying the necessary files it will display a progress bar for your information. The installation should take a few minutes depending on your hardware.



Once the main applications have been installed the setup application will install a couple of additional utility programs required by the RIP. Please select the 'Install' option to continue.



Once the installation is completed successfully the installer will reboot your computer. Shiraz is now fully installed on your Mac OSX platform and is ready to be setup and use. There should now be an alias on your dock called 'Shiraz V6.2'. Click on this alias to load the Shiraz V6 Launcher.

Linux

To install Shiraz on Linux platform, copy **shirazv6_linux.tar.gz** from the CD on to a partition on your system. The installation file is a compressed tar file which includes all necessary components to run Shiraz on Linux.

Double click on the tar file to unpack the folders. You will need root access to install dongle drivers for Shiraz security key on Linux platforms.

You can obtain the Dongle driver for your platform from www.hasp.com . Find the correct USB driver and install per instructions from the HASP site.

After installation run the Server from the bin folder of your destination installed path once, to register the local server path in your system. Exit the server, the path has been saved in the system and is ready to be launched and seen by other clients.

To start using Shiraz you should run the Shiraz launcher from a terminal screen:

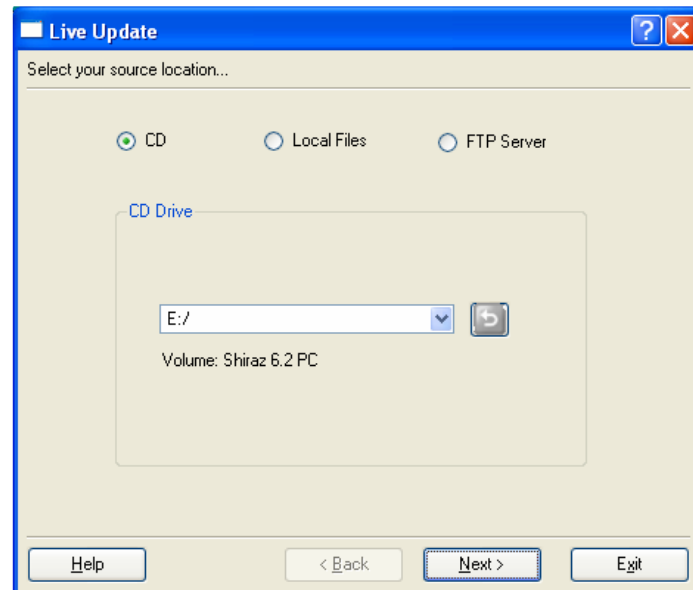
```
$cd /shirazx/bin
$./shirazx
```

This will display a Shiraz launch bar from which you can run the various parts of the RIP.

Shiraz Linux version is certified for Red-Hat and Suse Distributions.

Install/Update Printer Profiles

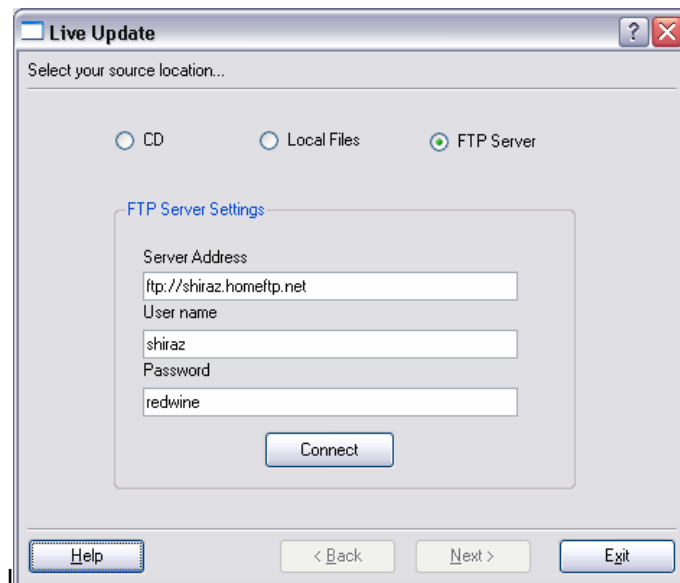
When the setup program has finished its installation, you are asked if you would like to Install/Update Printer Profiles. If you left this option ticked, you will automatically be taken to the Live Update application within Shiraz. If you chose not to update immediately after install and want to launch the updater after installation, from the Shiraz launcher, select Tools and Live Update.



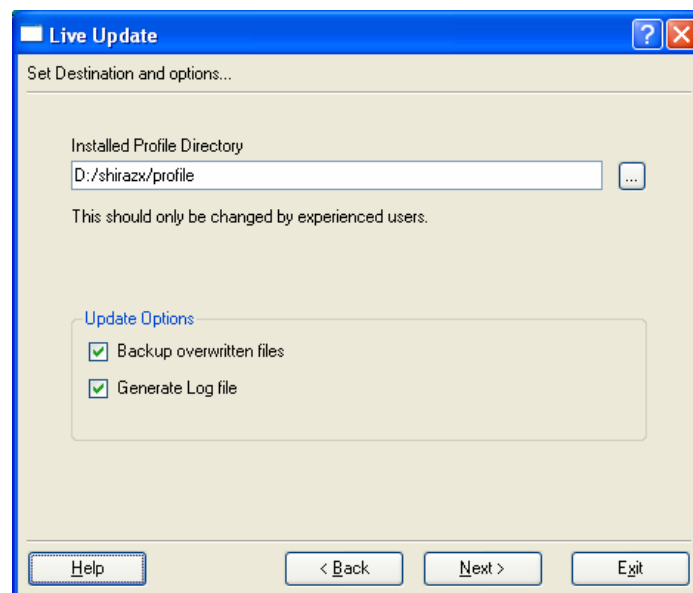
You will be given the choice of the source location to install profiles from. If you are using the Shiraz DVD then select the CD option. The program will automatically check for profiles folder located on the DVD and if present and correct will show the name of the drive and its volume name. If not found then it will ask you to insert the profile CD.

If the Profile folders are located on a different drive on the computer or network then select the 'Local Files' option. You will then need to browse and locate the Profile folder.

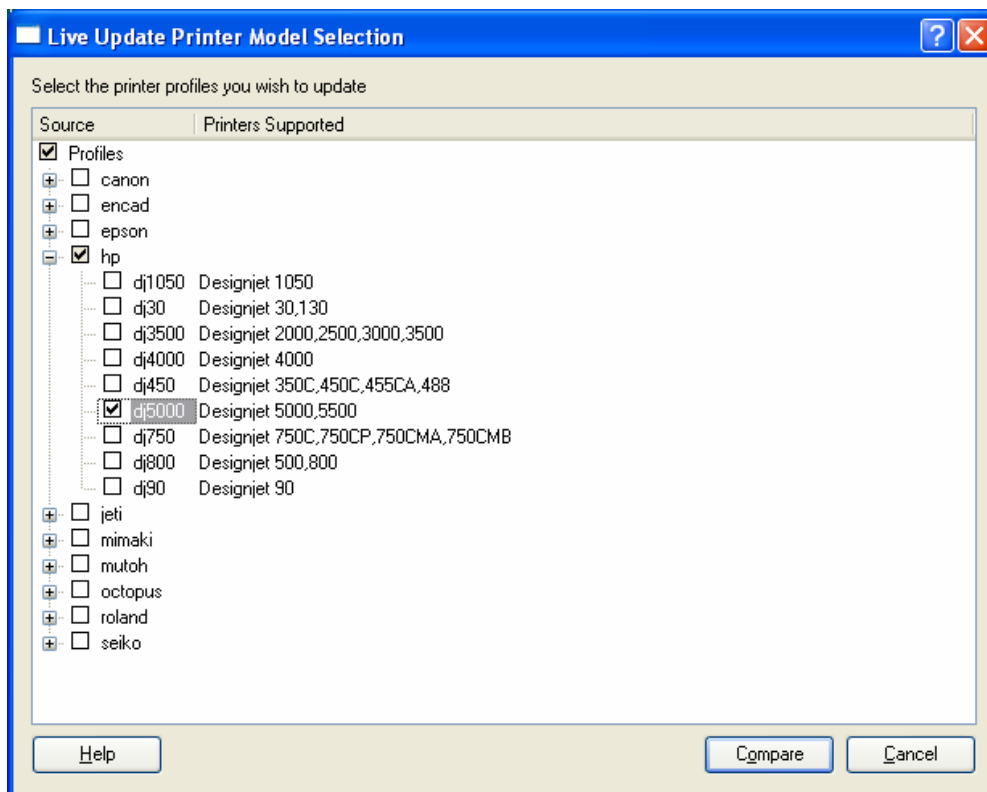
It is also possible to download the latest profiles from the Shiraz FTP site by selecting the 'FTP Server' option. The RIP computer needs to be connected to the internet for this option to work.



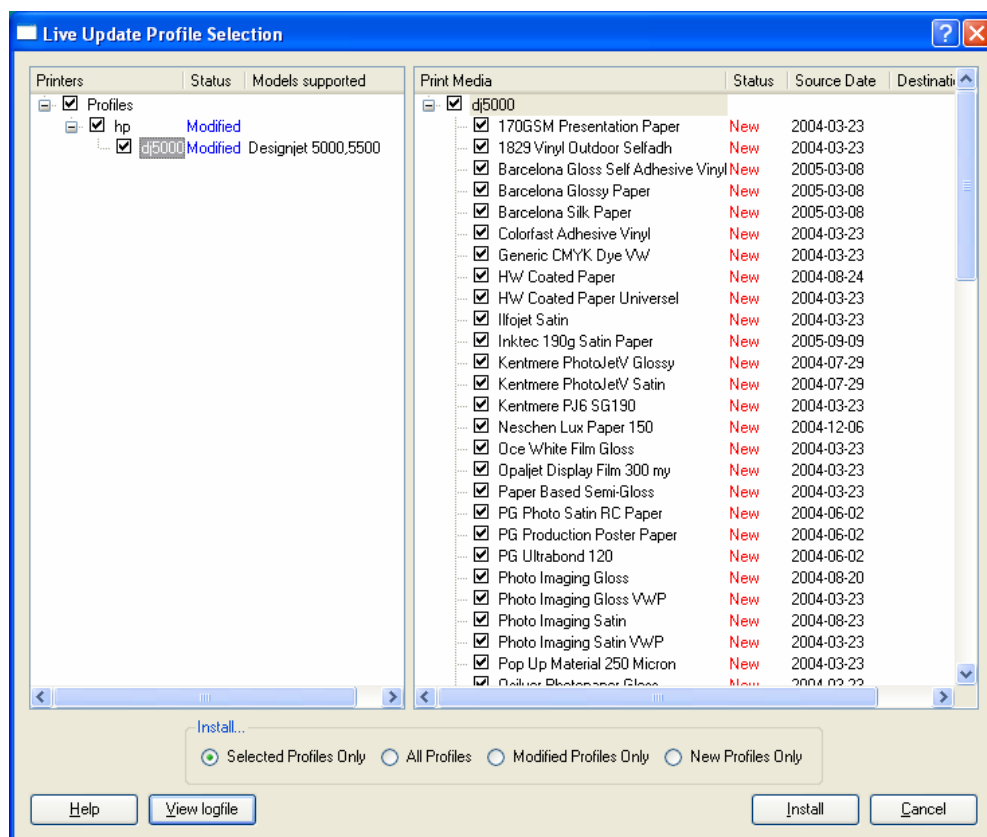
Once you have selected the required source click 'Next' to go to the next stage.



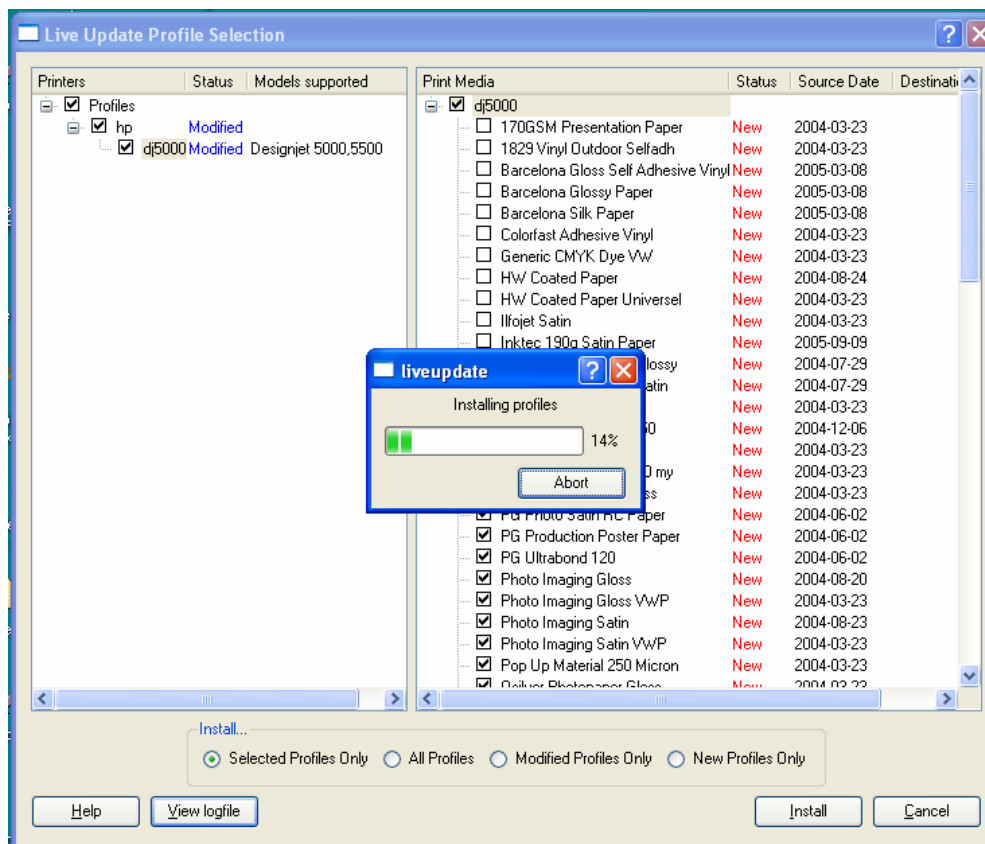
The screen shows the destination path and installation options. You should normally have no reason to change any of these settings. Click 'Next' to continue.



You will now need to select the actual printer make and model that you require profiles for. You can select any number of printer models required. Click on the 'Compare' button to continue. The program will now examine the list of existing profiles on the RIP to what is available and show a list with their status as shown below.



You can either manually select the required profiles or globally by selecting from one of the Install options. Once happy with your selection click the 'Install' button to commence the operation.



The system will now indicate the install progress and once finished will indicate the total number of profiles installed. The profile list is un-ticked as they are being installed.

To get a full report click on the 'View logfile'. There you will see the name of the profiles installed and any other messages produced during the install.

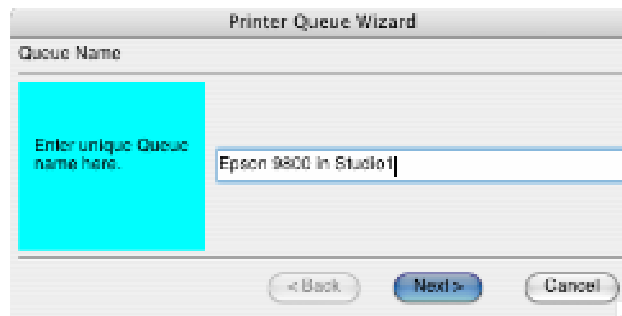
Adding a New Queue

The first thing we need to setup is a new queue in the Shiraz V6 Server. From the launcher click on the Server button to start up the Shiraz Server.

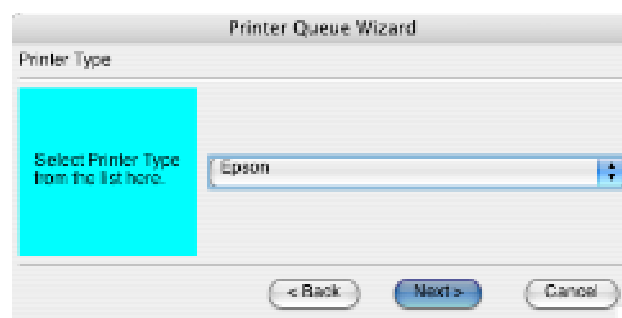
As there are no queues configured yet the following messages are shown.



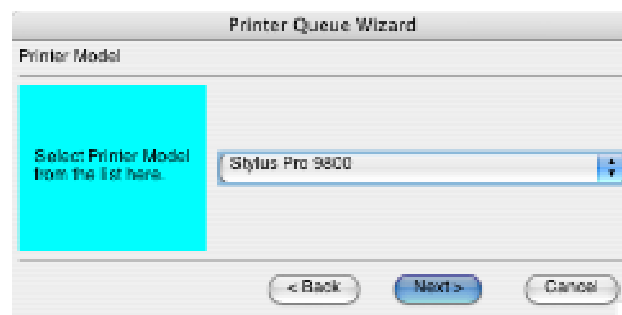
Click 'Yes' to run the queue wizard that will assist in setting up the required queue. You are first required to type a unique name for the queue. Type an easily recognisable name for your printer queue and click next.



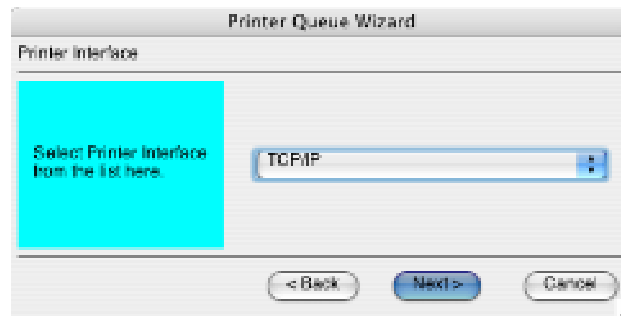
Now select from the pull down menu what printer manufacturer you want to use.



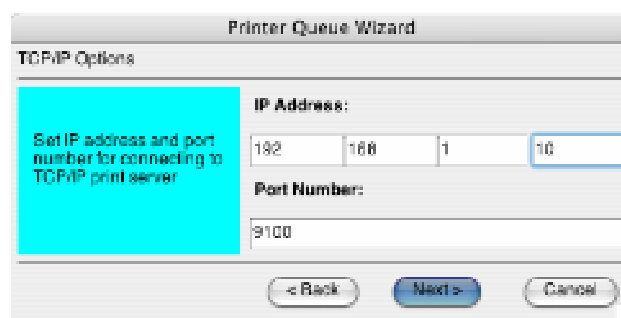
Then select the particular model from the list of available models for that particular manufacturer.



Next you will decide on the interface type from the computer to the printer. Based on the printer make and model a list of valid interfaces will be shown.



If you select TCP/IP, you will be asked for the IP address and port number of your printer. Contact your network administrator if you don't have this information to hand.



Depending on what you selected for your interface type, determines what you see on the next screen. If you select Null or File, there will be no more input needed. Click Finish and your queue is now ready.

If you select spooler (Windows only), you will be given a list of the currently installed printers from your Windows printer's folder. Select the correct spooler for your printer and click next then click finish to complete the setup of that queue.

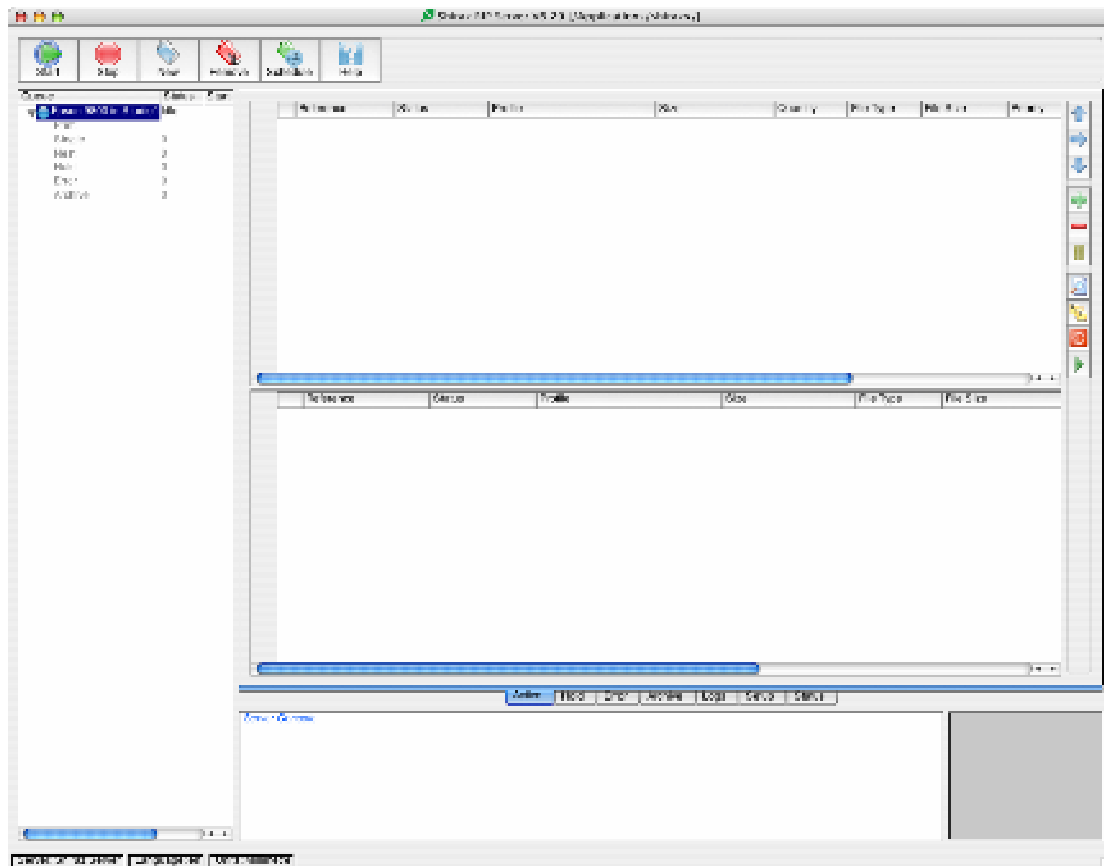
If you select Parallel, select the available LPT port from the list and click next, then click finish to complete the setup of that queue.

If you select USB (Mac OSX only), you will need to select the device from the list, then click next and click finish to complete the setup of that queue.

If you use an Epson printer on Firewire (Mac OSX only), you will be given the option of Epson Firewire interface. Select the relevant port and click next, then finish to complete the setup of that queue. Please be aware that to use the Epson Firewire, you MUST have installed the Firewire driver supplied with the printer or downloaded from the Epson support website. If you have a Mimaki JV3 or JV4 printer, you will be given the Mimaki Firewire (Windows only) option in your interface selection screen. Select the relevant Firewire port and click next, then click finish to complete the setup of that queue. Please note that you must have installed the Mimaki firewire drivers as supplied by the manufacturer for this to work.

If you use a Seiko printer, you will be given the option of a SCSI interface (Windows only). Select the relevant SCSI channel and click next, then finish to complete the setup of that queue. Please note that you must have installed the ASPI drivers for your particular SCSI card and have the printer switched on before booting up the PC.

Once you have completed the queue setup the Serve main window appears with the name of the newly created queue on the left hand side.



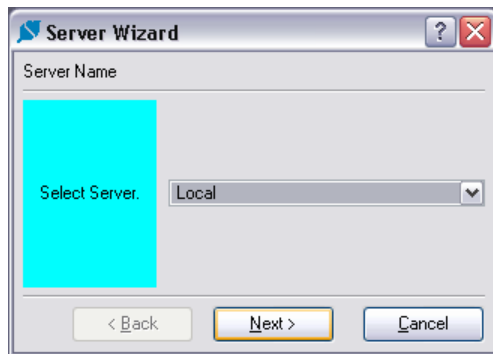
To start the queue so that all incoming jobs are processed and printed click on the 'Start' button at the top of the window. For more detailed operation of the server including all the various configurations for nesting, workflow management, hot queues and others please refer to the Server manual or online help.

Sending Jobs to the Server

Once the required queue has been setup correctly we can now send images to it for processing. This can be done in various ways. These include hot queue, straight from applications, directly from the Server browse (including drag & drop) and from the Shiraz Design module.

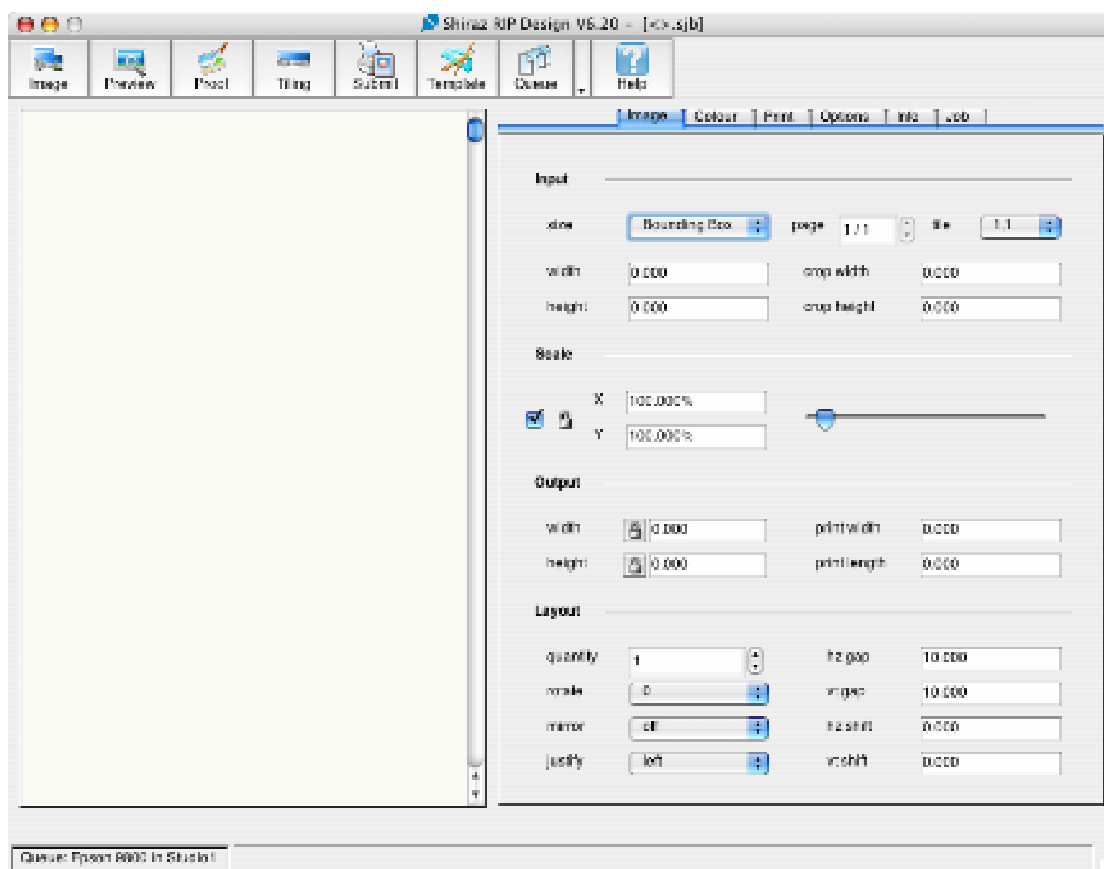
Lets have a look at the submission of jobs to the Server from the Design module. Click on the Design option from the launcher to start up the program.

The first time that you run the Design module, you are asked for a username. If the user does not exist then a server wizard is used to select from the available queues to connect to. The server can either be Local or Network. Local server means that it resides on the same computer as where the Design program is being used. See the Design manual for more information.



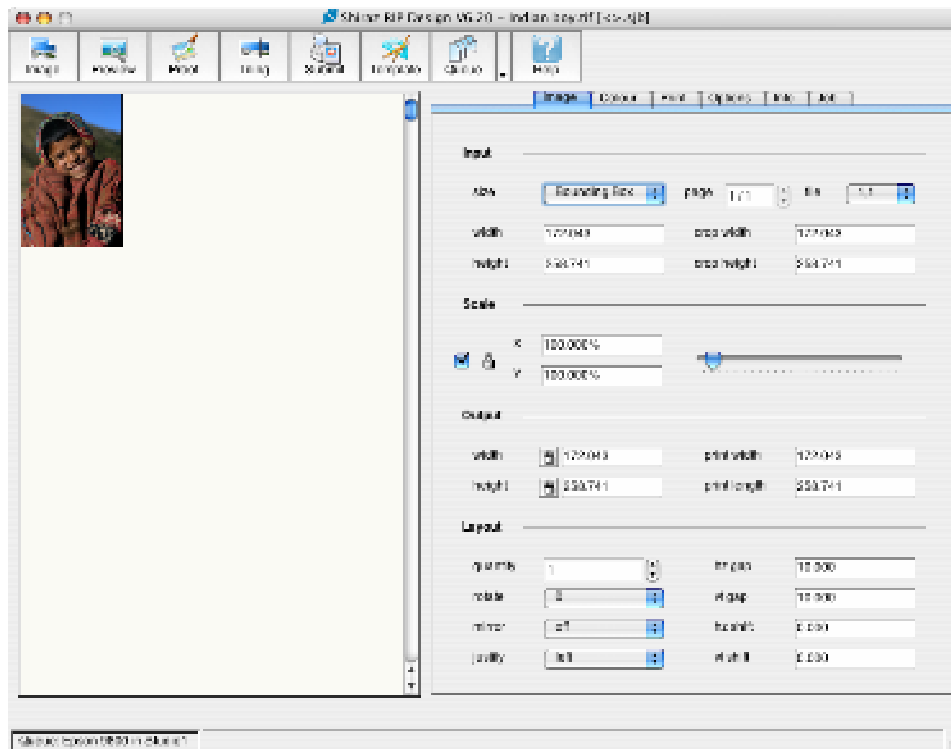
Click next to select from the list of available queues on the server. Press next to confirm and finish the selection. Next time you login with the same name then this stage is skipped.

Once you have logged in successfully the Design window will be shown as displayed below.



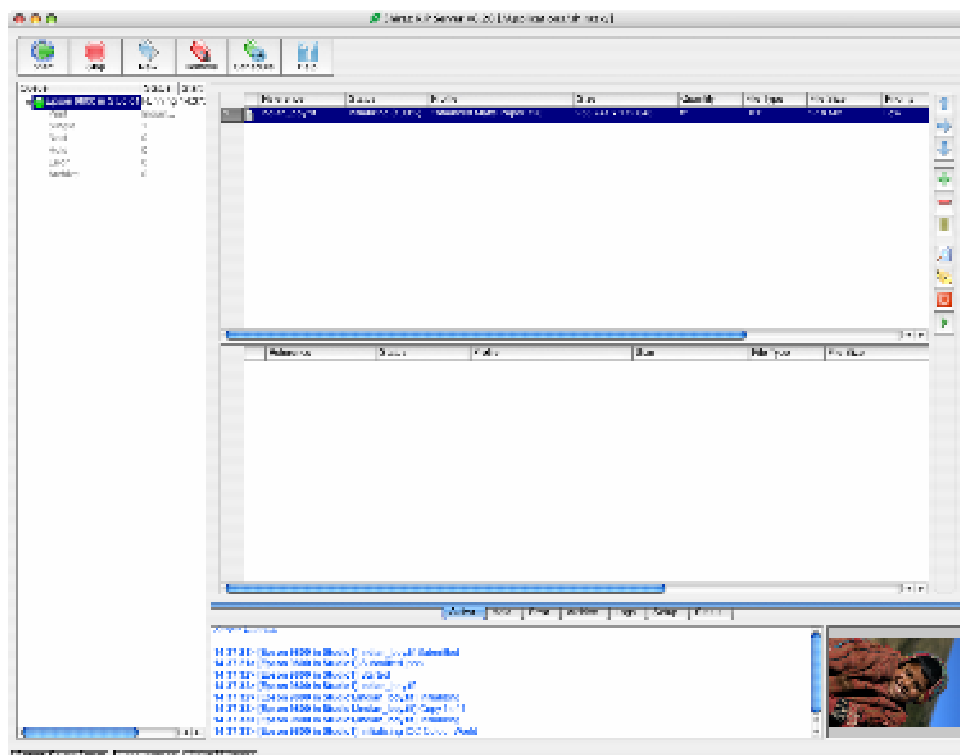
The information for the Design screen such as the list media tables, roll size etc. will be uploaded from the queue's setup on the server. Please note that the server is where all the information and setup are held for individual queues. If any changes to the setup are required then you must refer back to the setup of that queue on the server.

To create a job that we can then submit to the server for printing we must first choose an image. Click on the Image icon on the top toolbar and browse for any of the supported image types (PS, PDF, EPS, TIFF, JPEG). You can also drag & drop an image onto the design window if preferred.



Once you have selected your image click on the Preview button to RIP and display the actual image. Next click on the Colour tab and select the profile table required. There are various controls for sizing and positioning of the image if required. Please refer to the Design manual or online help for more information,

Now to print your first image simply click on the Submit button and the job will now be picked up by the server and shown in the queue list.



If the queue has been started then the job will be processing for output.

Additional Help

Located within the Shirazx folder you will find a Doc folder that contains all the manuals for the Shiraz RIP in various languages. Also available are the video tutorial that you will find on the Shiraz DVD. These tutorial will take you through the setup and using of the Shiraz RIP step by step.

If you require any additional information or have any queries please email us on support@shiraz-rip.com.